

## Tucana 5250 Series

The perfect choice for beauty and safety

### 5250 Series

25 Gauge (.019" min)  
2" Sections



Shown with Longwood design and 6 pane windows

## Beauty, Durability, Safety

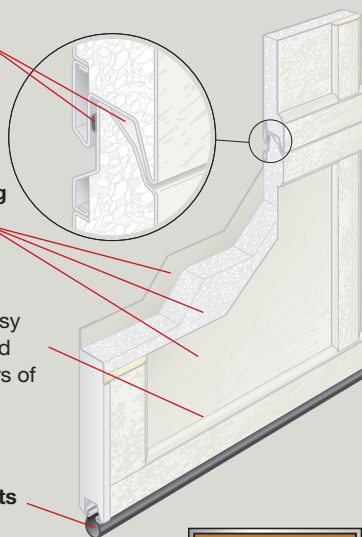
The Hörmann Tucana Collection offers the beauty of recessed panel design and unsurpassed safety of our FingerGuard™ pinch-resistant joints. The virtually maintenance-free Tucana Collection doors feature a tough steel front and back with polystyrene core, giving an R value of 6.9. A wide range of standard designs is available to complement your home.

Deep tongue and groove section joint contribute to the door's **excellent strength**. Intermediate seals prevent air infiltration, which enhances the **insulation** properties.

The steel front and back 3-layer sandwich construction with **insulating polystyrene core** increases energy savings and provides a very smooth and quiet door operation.

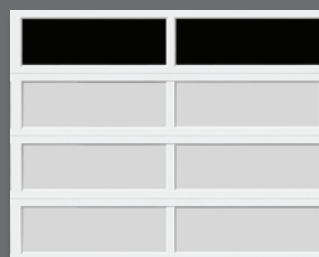
Recessed panel inlay designs with easy to clean woodgrain texture, galvanized and **finish painted steel** provide years of trouble-free performance and beauty.

The bottom weather seal **keeps out wind, rain, debris and other elements** for added energy savings.

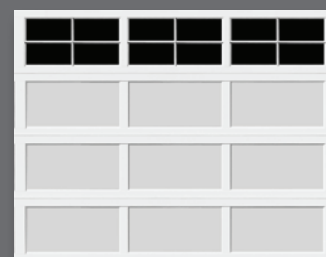


\*Ask your dealer for details

## Choose your own design



**Longwood**  
with Standard windows



**Sorrento**  
with 4 pane windows



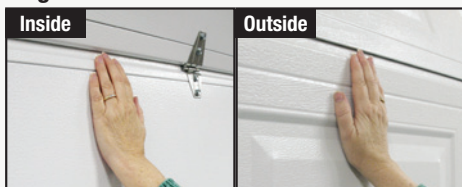
**Sanford**  
with Prairie windows



**Davenport**  
with 4 & 6 pane windows

## Hörmann Exclusive

### FingerGuard™ Pinch Resistant



The FingerGuard™ section joint and hinges provide air-tight seal and prevent finger injuries inside and outside.

### 11 Ball Bearing Nylon Rollers



Hörmann nylon rollers feature 11 pre-lubed ball bearings encased in a high strength steel casing that provides a quiet ride and years of reliable service.

### Between Section & Side Seals



Factory installed between section weather seal and side seal offer maximum protection from the outside elements while further enhancing the insulation properties of a door.

## Choose the color which best suits your home

White

Sandstone

## Galaxy Paint System

Hörmann's exclusive Galaxy Paint System is available to further customize your new Tucana door with 28 semi-custom colors or unlimited color matching capabilities.



With Hörmann Galaxy Paint System, you will not only be confident that you have purchased the highest quality and safest garage door for your home but one that will match the color of its exterior with a factory finish that will last.

## Specifications

Series	Tucana 5250
Steel Thickness	25 ga.
Section Thickness	2 in.
R - Value	6.9
Polystyrene Core Insulation	Standard

Panel Designs	
Longwood	Standard
Sorrento	Standard
Sanford	Standard
Davenport	Standard

Available Colors	
White	Standard
Sandstone	Standard

Warranty	
Sections	Limited Lifetime
Hardware	10 years
Springs	10 years

Please call us at 1-877-OK-HORMANN (1-877-654-6762) for more details.

## SilentDrive®

The advanced technology in SilentDrive® garage door openers provide:

- Ultra quiet performance
- Unique safety features
- Maximum convenience



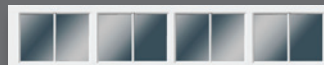
## Select your favorite window design



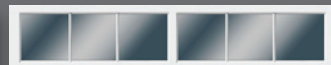
Glazed standard short



Glazed standard long



Glazed 2 pane



Glazed 3 pane



Glazed 4 pane



Glazed 6 pane

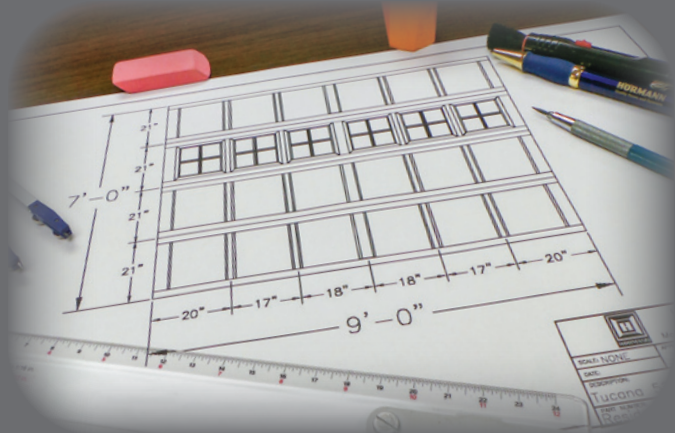


Glazed prairie short



Glazed prairie long

## Made To Order Designs



Whether you are matching an existing recessed panel door or have a custom panel arrangement in mind, Hörmann can deliver the perfect look that you are looking for. Simply provide your Hörmann Authorized Dealer with the panel dimensions for your custom door and we will provide an engineering drawing for your approval.

## AVAILABLE FROM:



## Call us ► 1 877 OK HORMANN (1-877-654-6762)

Hörmann LLC, 5050 Baseline Road, Montgomery, Illinois 60538  
Phone: 630-859-3000 Fax: 630-859-8122  
Email: info@hormann.us www.hormann.us



Everything you've always wanted in a garage door, and more.

